

Tennessee HEREFORD



Tennessee Hereford Association Newsletter

Vol. 48, Number 1 Winter 2025



Tennessee Hereford Newsletter
3149 Old Highway 68
Madisonville, Tennessee 37354

The Cowman's Kind XXVIII

MARCH 22, 2025

BULL & FEMALE SALE

VISUAL QUALITY • NUMERICAL EXCELLENCE
MATERNAL HERITAGE



CMF 636H LEVI 912L

P44575588 / DOB: Nov 30, 2023
Sire: CMF 333E HITCHING POST 648H P44203559
Dam: CMF 97B ANN 636H P44203369

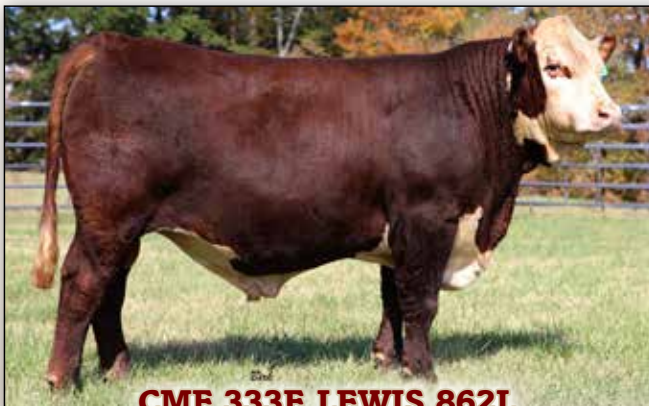
CED	BW	WW	YW	DMI	SC	SCF	MILK	M&G	CEM
7.2	2.5	69	108	0.6	1.7	24.1	30	65	1.3
20%	46%	8%	12%	85%	4%	6%	32%	14%	55%
MCW	UDDR	TEAT	CW	FAT	REA	MARB	BMI	BII	CHB
100	1.40	1.30	92	0.062	0.93	0.18	495	588	146
71%	10%	34%	5%	91%	2%	36%	5%	5%	14%



CMF 487G LEGACY 911L

P44575584 / DOB: Nov 30, 2023
Sire: CMF 1720 GOLD RUSH 569G ET P44108010
Dam: CMF 296D VICTORIA 487G P44108424

CED	BW	WW	YW	DMI	SC	SCF	MILK	M&G	CEM
11.1	0.1	64	100	0.5	0.8	20.7	35	67	5.9
6%	9%	21%	27%	76%	74%	21%	9%	10%	9%
MCW	UDDR	TEAT	CW	FAT	REA	MARB	BMI	BII	CHB
61	1.30	1.30	86	0.042	0.65	0.70	464	585	192
7%	29%	34%	11%	74%	18%	1%	10%	5%	1%



CMF 333E LEWIS 862L

P44575434 / DOB: Sept 6, 2023
Sire: INNISFAIL TRADEMARK 1939 ET P44097651
Dam: CMF 59A ANN 333E P43875275

CED	BW	WW	YW	DMI	SC	SCF	MILK	M&G	CEM
3.9	2.0	74	118	0.6	1.0	17.1	24	61	3.3
46%	35%	3%	4%	85%	53%	54%	72%	28%	30%
MCW	UDDR	TEAT	CW	FAT	REA	MARB	BMI	BII	CHB
118	1.50	1.50	91	0.062	0.73	0.74	424	556	201
94%	3%	4%	5%	91%	10%	1%	22%	10%	1%



CMF F94 LANDRY 868L ET

P44575399 / DOB: Sept 10, 2023
Sire: CMF 1720 GOLD RUSH 569G ET P44108010
Dam: APH 651 MISS REVOLUTION F94 ET P43965378

CED	BW	WW	YW	DMI	SC	SCF	MILK	M&G	CEM
7.0	0.5	65	104	0.6	1.2	25.0	31	63	4.3
21%	12%	18%	19%	85%	31%	4%	26%	21%	20%
MCW	UDDR	TEAT	CW	FAT	REA	MARB	BMI	BII	CHB
76	1.30	1.20	102	0.052	0.98	0.78	551	679	218
21%	29%	61%	1%	84%	1%	1%	1%	1%	1%



Rob Helms (731) 571-8213
Steve or Hayden Helms (731) 968-2012
Email: robhelms@netease.net

Auctioneer: Eddie Burks TFL # 4123, TAL # 4990
To request a sale book, contact:



Mark Sims
(580) 595-0901
www.simsplusllc.com

565 CANDY MEADOW FARM ROAD • LEXINGTON, TENNESSEE 38351

Genetic Source

BULL + FEMALE

Sale

FEBRUARY 22, 2025

2090 OLD AIRPORT RD. NUNNELLY, TN 37137 **1:00 PM CST**

Offering

**BULLS, BRED HEIFERS, PAIRS, EMBRYOS, SEMEN,
+ BRED F1 BALDY HEIFERS**

WF 174E FOREFRONT 2272 2597 - 44561102



CE	BW	WW	YW	SC	MM	MG	UDDER	TEAT	CW	REA	MARB	BMI	BII	CHB
5.7	2.0	70	115	1.7	43	77	1.4	1.5	77	45	0.15	477	571	138

CLC CHF JOURNEY 53D 35L - 44448429



CE	BW	WW	YW	SC	SCF	MM	MG	UDDER	TEAT	REA	MARB	BMI	BII	CHB
8.4	0.4	63	87	1.6	23.7	30	62	1.4	1.4	0.36	-0.08	426	500	71

CLC H086 JUDGEMENT 76E 207L ET - 44556421



CE	BW	WW	YW	SC	MM	MG	UDDER	TEAT	CW	REA	MARB	BMI	BII	CHB
3.1	3.0	75	120	1.4	28	65	1.4	1.3	100	1.05	-0.07	320	394	124

WF 332A ADVANCE 2034 2498 - 44447625



CE	BW	WW	YW	SCF	MM	MG	UDDER	TEAT	CW	REA	MARB	BMI	BII	CHB
4.6	2.1	51	88	22.2	33	58	1.1	1.1	81	0.41	0.30	488	533	142

CLC 156J PROPHECY 80F 205L ET - 44552745



CE	BW	WW	YW	SC	MM	MG	UDDER	TEAT	CW	REA	MARB	BMI	BII	CHB
5.3	2.9	56	95	1.2	25	52	1.5	1.6	84	0.45	0.22	480	565	145

WWW.CHAPMANLANDANDCATTLE.COM

HOMOZYGOUS POLLED



Ryan Chapman
615.335.3187

John Thomas Woolfolk
731.345.1585

Bobby Singleton
615.708.1034



Scott Woolfolk
731.571.7399
Johnny Woolfolk
731.225.2620
John Thomas Woolfolk
731.345.1585

In This Issue



President's Comments	5
Editor's Comments	7
Producer Spotlight	11
Area Sales Report	16
THMP Report	16
TJHA News	17
Cattlemen's Congress Winner	17
Hereford Women Report	19
Upcoming Events	20
Advertising Index	21

**Cover Photo: Thousand Hills Family Farm, Cleveland, Tennessee.*

TENNESSEE HEREFORD ASSOCIATION

STAFF

<p>Kay Coley, Treasurer 140 Morgan Rd, Lafayette, TN 37083 (615) 804-7843 tennesseehereford@gmail.com</p> <p>Michael Coley Website & Social Media michaelcoley2040@gmail.com</p>	<p>Glenda Rickman, Secretary 553 Enville Bottom Rd. Milledgeville, TN 38359 (731) 925-0567 glendakr@yahoo.com</p> <p>Kathryn Ingram THA Newsletter Editor (423) 337-1383 katingram.123@gmail.com</p>
--	--

DIRECTORS

<p>President Meredith Collins Lewisburg, Tenn.</p> <p>Dakota Brasher Bath Springs, Tenn.</p> <p>Claude Callicott, Only, Tenn.</p> <p>Mike Rogan Rogersville, Tenn.</p> <p>Russell Crouch McMinnville, Tenn.</p> <p>Larry Cunningham Spring City, Tenn.</p>	<p>Vice President Josh Mansfield Liberty, Tenn.</p> <p>Jason Day Telford, Tenn.</p> <p>Stan East Carthage, Tenn.</p> <p>Emily Martin Pope Yorkville, Tenn.</p> <p>Eric Walker Morrison, Tenn.</p> <p>Sally Wingler Christiana, Tenn..</p>
--	---

Connect with us on Facebook, Instagram and Twitter, @TNHereford and at www.tnhereford.org

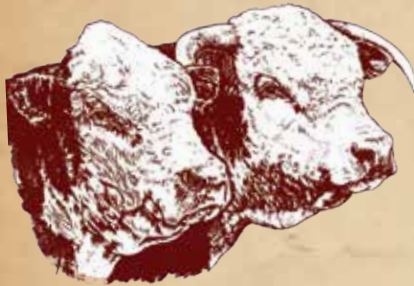
PUBLICATION DEADLINES & CIRCULATION INFORMATION

Issue	Ad/Article Space Deadline	Print Ready Submission
<i>Feb. 1</i>	<i>December 30</i>	<i>January 10</i>
<i>April 1</i>	<i>February 25</i>	<i>March 15</i>
<i>Aug. 7</i>	<i>June 30</i>	<i>July 15</i>
<i>Oct. 15</i>	<i>Sept. 22</i>	<i>Sept. 25</i>

- Mailed to 600+ Hereford breeders in Tennessee and surrounding states.
- Expanded mailouts in Summer and Winter issues.
- Featured on the THA Facebook, Instagram, and Twitter Accounts with 3,000+ followers.
- Posted on the tnhereford.org Website with 5,500+ views per year.
- Email Blast to over 600 subscribers.

The 37th Annual

TENNESSEE BEEF AGRIBITION HEREFORD SALE



March 7-8, 2025 ★ Lebanon, Tenn.
James E. Ward Agricultural Center



Lot 3- Mezrano Farms



Lot 26- C/N Cattle Co.



Lot 28- River Circle Farms



Lot 1- Perkins Cattle Co.



Lot 35- Bolen Herefords



Lot 21- Walker Herefords



Lot 32- Kerr Polled Herefords



Lot 46- Coley Herefords



Lot 38- Parish Farms

Saturday, March 8, 2025
Cattle Viewing—8:00 AM (CST)
Hereford Sale—11:30 AM (CST)

Friday, March 7, 2025
Hereford Parade—12:30 PM (CST)

Catalog available for viewing at
www.hereford.org & www.tnhereford.org

Call Bobby Singleton at 615.708.1034 for
more information.

Online bidding available at **LiveAuctions.TV**

THA President Comments

—Meredith Collins, THA President

As Mason has officially retired from the Junior show ring and activities, I am very thankful that he chose the Hereford Breed. Through the Tennessee Hereford Association and American Hereford Association, I have experienced the opportunity to benefit both professionally and personally. I encourage each one of you to get involved on the state and national levels and reap the benefits of being a member of such foundational organizations.

Networking Opportunities:

Membership connects you with peers, mentors, and industry leaders. It fosters collaboration and can open doors to new career opportunities, partnerships, and professional relationships.

Access to Resources:

Access to exclusive resources such as research, genetics, training, certifications, and best practices that help you stay informed and competitive marketing.

Advocacy and Representation:

Opportunities for a critical role in advocating for the breed. They represent your interests at the state and national levels, influencing legislation and regulations that affect our industry.

Professional Development:

Our Hereford associations offer professional

development programs, including conferences, workshops, and webinars, allowing members to continuously improve skills, knowledge, and qualifications.

Leadership Opportunities:

Become active members and be eager for opportunities to serve in leadership roles, such as on boards or committees. A perfect opportunity to develop leadership skills and increase visibility in the industry.

Staying Informed:

A great avenue to keep updated on industry trends, changes in laws or regulations, and other important news. A platform to stay ahead of the curve and adapt to changes more effectively.

Community and Support:

One of the most important rewards of being an active member is a sense of community, offering support through challenges, sharing experiences, and learning from others in the same profession or industry.

Overall, being involved in both the THA and AHA enhances your program, expands your influence, and positions you as a leader in your field. If you are a retiring junior member or have just purchased Hereford cattle please join the THA and AHA.



W&A Hereford Farm, LLC

Watch for our upcoming sale consignments this Spring!



The 57th Annual North Carolina Hereford Classic

March 22, 2025 - Shuffler Farm, Union Grove, NC

- Selling GTW C776 Miss Homeward 2012 (P44196610) with fall heifer calf GTW Ms Guideline 414 (P44600722), serviced to Whitehawk Chief 318G ET



The 5th Annual South Carolina Joint Hereford & Red Angus Sale

May 3, 2025 - T. Ed Garrison Cattle Complex, Pendleton, SC

- Selling two cows with fall heifer calves, both serviced to KCF Bennett H315 L190W
- GTW 817 Miss Kismet 2111 (P44297982) with GTW J338 Ms Kismet 407 (P44600531)
- WHR 4013 B359 Beefmaid 267G (P44056361) with GTW 197K Ms Upgrade 403 (P44600714)

W&A Hereford Farm, LLC — George, Tammy, William & Andy Ward
3404 Shady Grove Rd. George (434) 251-3637 gwwardjr@comcast.net
Providence, NC 27315 William (434) 334-2625



HEREFORD & ANGUS BULL SALE

NOON • SATURDAY, **MARCH 8, 2025** • MAYS LICK, KY



BOYD RUNWAY 4028 • Reg# 44552328

1/7/24 | KCF Bennett Monument J338 x Mohican Rose 90G
CE 11.4; BW -0.5; WW 68; YW 104; MM 43;
REA 0.65; MARB 0.27; BMI\$ 425; CHB\$ 154
This big-time Herd Sire will see heavy use in our program –
Extra rib shape and volume with muscle shape and a super sound structure!



BOYD OCTANE 3140 • Reg# 44519368

9/2/23 | SHF Houston D287 H086 x Boyd 5330C Red Lady 7156
CE 2.1; BW 3.3; WW 71; YW 121; MM 31;
REA 0.74; MARB 0.23; BMI\$ 416; CHB\$ 164
Added Power and Performance – Plus he is backed by one of our high maternal
females who has weaned five calves with a nursing ratio of 108!



BOYD COWMAKER 3137 • Reg# 44519370

9/1/23 | SHF Houston D287 H086 x Boyd Rita 0213
CE 3.4; BW 2.4; WW 74; YW 117; MM 30;
REA 0.89; MARB 0.16; BMI\$ 426; CHB\$ 148
Here is a Herd Sire who has the credentials and the phenotype
to make a big-time set of replacements!



BOYD DYNAMITE 3176 • Reg# 44520635

11/2/23 | Birdwell Dynamic 5022 x Boyd 7154 Rita 0005
CE 6.5; BW 2.2; WW 68; YW 111; MM 35;
REA 0.99; MARB 0.23; BMI\$ 518; CHB\$ 161
Outcross genetics in this individual who has been a standout since birth
and is dam is a picture-perfect female with unbelievable udder quality!



BOYD GOLD PLATED 4053 • Reg# 44552359

2/16/23 | Boyd Power Surge 9024 x Boyd 7154 Rita 2203
CE 2.0; BW 3.3; WW 71; YW 113; MM 34;
REA 0.72; MARB -0.19; BMI\$ 311; CHB\$ 101
A stout dark red bull with extra performance and from a highly productive
and gorgeous two-year old dam with a perfect udder!



Call or email to receive a sale book!



Over 100 years in the beef cattle business!

6077 Helena Rd. • Mays Lick, KY 41055
Charlie Boyd II – 606-584-5194 • cboyd2@maysvilleky.net
Blake Boyd – 606-375-3718 • Logan Boyd – 606-375-3366

BOYDBEEF.COM

Editor Comments - How to Decide What to Buy?

—Kathryn Ingram, Tennessee Hereford Editor

The snow and cold of early January led to more time for scrolling through social media. I came across a thread discussing the criteria used to select new breeding animals for your herd. Phenotype, EPDs, pedigrees, and genetic abnormalities were discussed at length with varying opinions on where to place the most emphasis. I believe there is more than one correct answer to that question. The criteria emphasis will vary depending on the goal of the cattleman. Decisions should help improve your bottom line. A cow-calf operation will have different needs than someone who is purchasing a herd sire for a terminal cross. Before buying or breeding, determine what your end goal is.



Phenotype

Phenotype should always be a major part of the decision. Structurally sound cattle with muscle and volume are essential to any operation. This provides the basis for animals that can provide longevity in the herd and produce the end goal of beef. That being said, the giraffe necked look currently popular in the show ring will not make someone's feeder calves worth more money. However, this look is needed if your income is based on selling heifers to juniors. Pretty also outsells ugly if all other attributes are equal.

Pedigrees

Multiple people mentioned pedigrees as a major part of their decision in choosing an animal. Popular bloodlines do help market animals in the seedstock sector. Animals without an AI sire in the first or second generation of the pedigree (on both the sire and dam's side) tend to take a cut in price on sale day. Pedigrees do not guarantee high-quality cattle, but they are a marketing tool.

Genetic Abnormalities

The discovery of new genetic abnormalities results in fear and dread among cattle producers. Unfortunately, there will be more discovered as time goes on, mutations and variations will appear and eventually cross resulting in a new abnormality. The question is what do we do with these animals that have great phenotypes with good EPDs that are, unfortunately, carriers?

In the Facebook thread, opinions ranged from they would never buy a carrier to they would buy a carrier at a discounted price and "breed it out of them". Comments included ethical concerns of selling purebred stock with carrier status. I do not believe it is unethical as long as the

animals are identified. A commercial cattleman looking for a terminal cross sire for his Angus cows will not be affected by purchasing a Hereford bull that is a carrier of a Hereford abnormality. As long as two carriers are not crossed, an affected animal will not be produced. If two carriers are crossed it is a 25% chance the offspring will be affected, 50% chance the calf will be a carrier, and a 25% chance it will be free of the genetic abnormality. Knowing the genetics of your herd will allow you to improve the phenotype and EPDs of your stock without producing an affected animal. It is possible to eventually "breed it out" of carrier bloodlines. Commercial cattlemen need to keep genetic abnormalities in mind if they are keeping replacement females from their herds as well.

I have discovered that many producers (commercial and new purebred) become confused with all of the codes after the animal's name. The genetic abnormalities end with a P (possible, but not tested), C (tested as a carrier), F (tested as free of abnormality) or A (affected animal). For example (DBP) indicates that the animal has the possibility of being a carrier for Delayed Blindness but has not been tested for this abnormality. An animal without a genetic code shows that the animal does not have any carriers for that trait in its pedigree. Visit Hereford.org for complete descriptions of the genetic abnormalities identified in the Hereford breed.

EPDs

Expected Progeny Differences or EPDs were the deciding factor for many of those making comments on the thread. Many stated that they would not look at the animal until they had viewed the EPD profile. EPDs should be a part of your decision in purchasing an animal or choosing a bull for artificial insemination. Which EPDs you should place the greatest emphasis on is based on your market and your herd goals. If you are planning to market 100% of your calf crop as market animals, the maternal EPDs will not help you.

The Hereford Association currently has 17 EPDs and 3 Indexes that make up the genetic profile. I have included an index with a brief description of these EPDs at the end of this article. It is a little overwhelming to keep up with all of the averages of 20 EPDs. Personally, I have started using the percentiles to compare EPDs instead of looking at the actual EPD number. I believe it is easier to look at at 50% being average, 1% being great or 99% as bottom. See the table below for the 50% data for the 2023-2024 calf crop (data from hereford.org website, current as of Dec. 2, 2024)

50th Percentile Avg for 2023-2024 Calves									
CE	BW	WW	YW	DMI	SC	SCF	MM	MG	MCE
3.3	2.7	57	91	0.2	1.0	17.1	27	56	1.6
MCW	UDDR	TEAT	CW	FAT	REA	MARB	BMI	BI	CHB
90	1.2	1.3	71	0.023	0.45	0.12	366	439	118

The best answer to the question on the thread is that it is all important. Phenotype and genetic traits must be used together to improve the cow herd. Single trait selection or basing purchases only on phenotype or genotype will not advance the breed or your bottom line.

The following information is a summarized version of the EPD Trait Definitions on hereford.org.

Calving Ease – Direct (CE) – is based on calving ease scores and birth weights and is measured on a percentage. CE EPD indicates the influence of the sire on calving ease in females calving at 2 years of age.

Birth Weight (BW) – is an indicator trait for calving ease and is measured in pounds.

Weaning Weight (WW) – is an estimate of pre-weaning growth that is measured in pounds.

Yearling Weight (YW) – is an estimate of post-weaning growth that is measured in pounds.

Maternal Milk (MM) – The milking ability of a sire's daughters is expressed in pounds of calf weaned. It predicts the difference in average weaning weights of sires' daughters' progeny due to milking ability.

Maternal Milk & Growth (M&G) – reflects what the sire is expected to transmit to his daughters for a combination of growth genetics through weaning and genetics for milking ability. It is an estimate of daughters' progeny weaning weight.

Maternal Calving Ease (MCE) – predicts how easily a sire's daughters will calve at 2 years of age and is measured on a percentage.

Mature Cow Weight (MCW) – designed to help breeders select sires that will either increase or decrease mature size of cows in the herd.

Udder Suspension (UDDR) – Scores range from 9 (very tight) to 1 (very pendulous) and represent assessments of udder support.

Teat Size (TEAT) – Scores range from 9 (very small) to 1 (very large, balloon shaped) and are subjective assessments of the teat length and circumference.

Scrotal Circumference (SC) – Measured in centimeters and adjusted to 365 days of age, SC EPD is the best estimate of fertility.

Sustained Cow Fertility (SCF) – is a prediction of a cow's ability to continue to calve from three years of age through twelve years of age, given she calved as a two-year-old.

Dry Matter Intake (DMI) – predicts the daily consumption of pounds of feed.

Carcass Weight (CW) – is a beneficial trait when considering the impact that pounds have relative to end product value.

Rib Fat (FAT) – reflects differences in adjusted 365-day, 12th-rib fat thickness based on carcass measurements of harvested cattle.

Ribeye Area (REA) – reflect differences in an adjusted 365-day ribeye area measurement based on carcass measurements of harvested cattle.

Marbling (MARB) – reflect differences in an adjusted 365-day marbling score (intramuscular fat, [IMF]) based on carcass measurements of harvested cattle.

Baldie Maternal Index (BMI\$) – is a maternally focused index based on Hereford x Angus females with progeny directed toward Certified Hereford Beef (CHB). This index is more critical of CE than the Brahman Influence Index (BII\$) and also has significant weight on fertility. There is positive weight on WW and a slightly negative weight on YW, which promotes early growth and then a slow down on growth to keep mature size manageable. The emphasis of IMF is greater than the emphasis of REA

Brahman Influence Index (BII\$) – is a maternally focused index based on Brahman x Hereford cows. The progeny for this index will be harvested in a commodity-based system. The largest emphasis is in fertility, which is measured solely by SC at the present time.

Certified Hereford Beef Index (CHB\$) – This is a terminal sire index that is built on a production system where Hereford bulls sire calves for the CHB market. There is some pressure put on CE and then positive weight on both WW and YW. There is more emphasis on fat in this index.. There is also a significant weight on both REA and IMF. It has no emphasis on fertility.

Jackson Farms
Registered Polled Herefords
PO Box 215, Cross Plains, TN 37049
Cell: 615-478-4483
billymjackson@aol.com
"Farming the same land since 1834"

East Tennessee Hereford Assn.

easttnpolledhereford.org
423.337.1383 • katingram.123@gmail.com
Secretary: Kathryn Ingram
3149 Old Hwy 68
Madisonville, TN 37354
ETHA Kick-Off Classic Sale
August 23, 2025, 11:00 AM • White Pine, Tenn.


Stan and Carolyn Webster
P.O. Box 70
Chestnut Mound, TN 38552
Farm location:
927 Cookeville Hwy.
Chestnut Mound, TN 38552
615-897-BEEF (2333) • Cell: 615-683-7869
Email: wpher@twlakes.net

SHOPE FARMS
TIM, JANET, & ZANE SHOPE
200 SHOPE ROAD, CLEVELAND, TN 37323
423-716-0046

HERD SIRES	AI SIRES
WLKR WHR JH VALIDATE 7203 223	CMF 1720 GOLD RUSH 569G
WALKER ENDURE 624D 241K	CMF 333E HITCHING POST 648H
KJ BJ 236X LEADER 891E ET	EFBEEF BR VALIDATED 8413
SHOPE TFF APACHE 1623	F FINAL TEST 722

THE
Sponsored by
the West Tenn.
Polled Hereford
Association

Southern Opportunity

HEREFORD SALE

SATURDAY, FEB. 15, 2025 • 12:00 PM (CST)
FIRST FARMERS CO-OP • LEXINGTON, TENNESSEE



LOT 4 - BRASHER FARMS



LOT 3 - BRASHER FARMS



LOT 5 - RIVER BEND FARM



LOT 7 - MARTIN POLLED HEREFORDS



LOT 1 - CHAPMAND LAND & CATTLE



LOT 10 - EBS POLLED HEREFORDS



LOT 20 - OGLE POLLED HEREFORDS



LOT 14 - HAPPY HILL POLLED HEREFORDS



LOTS 31-33 - LANEVIEW FARM

SELLING 54 LOTS
COWS • BULLS • BRED & OPEN HEIFERS • COMMERCIAL

Contact Bobby Singleton at 615.708.1034 for more information.
Catalog Available at www.hereford.org

Kerr Polled Herefords



Lot 32

KPH Miss Meredith L2603 (P44590521) BD: 11/20/2023

- KPH MR BENJI 401J x KPH PEARL H140
- Dark colored, short marked, long and deep bodied heifer by our Landmark son. A favorite of mine since birth.
- Bred November 13 to Birdwell Redbird 7098. Confirmed pregnant.

**Three of our best will
sell at the Tennessee
Hereford Agribition!**



**See you in Lebanon
on March 8, 2025**



Lot 31

KPH Miss Savannah L74 (P44590522) BD: 12/31/2023

- KPH MR WALLY K301 x KPH TULIP J108
- Savannah is a super dark, long bodied heifer from one of our best cows.
- Sells open.



Lot 33

KPH Miss Sierra. L2203 (P44590518) BD: 10/26/2023

- KPH MR BENJI 401J x NJW 36Z 27A TURQUOISE 371G E
- Super thick, deep bodied heifer sired by our Landmark son.
- Bred November 13 to NJW 119E 87G Endorsement 216J. Confirmed pregnant.

**Larry, Jan, & Ryan Kerr
Home: 865-977-6194**

**Cell: 865-209-2323
herefordkerr@gmail.com**

Producer Spotlight Walker Herefords



Walker Herefords is located in the picturesque farmlands and nurseries of Morrison, Tennessee. The Walker family own, manage, and help with the day-to-day operations of the farm and Walker Nursery. Eric Walker has been in the purebred Hereford Industry forty-four years. His family consists of wife Rhonda, son Cody and his family (wife Trisha, children Hayden, Westin, and Kimber).

How did you get your start in the Hereford Industry? How long have you been in the Hereford/Beef cattle business?

I have been breeding Herefords since 1981. Growing up with commercial Hereford cattle I wanted to start my own herd of registered Herefords. The first females were purchased from Cumberland View Farm, Clinton, TN.

Describe your operation:

We currently calve between 170 to 180 females each year. We calve both Spring and Fall. Our operation also has 2 full-time employees and others help during sale time. Conner Jagers is our herdsman and is assisted by Chris Shelton. My cousins, Will Mayes and Jake Mayes also help out on busy days and around sale time.

What philosophy or standards do you use to build the genetic base of your herd?

Our goal is to have calves that are born unassisted with acceptable birth weights and grow fast.

What goals do you have for the future of your herd?

Our main goal is to provide a product for our customers that will be a profit maker for them.

How do you market your cattle (private treaty, sales, etc.)

We host an annual female in early September of each year. This year's sale will be on September 6, 2025. Our first bull sale is scheduled for February 1, 2025. We have our own sale facility to host these events.

What is a "favorite" memory from your time in the Hereford Industry?

A couple of favorite memories is making the trip to the National Western and buying the Champion Sale Bull in the National Polled Hereford Sale in 1986. In 2023 we were honored to exhibit the National Champion Polled Hereford Bull at the Cattlemen's Congress in Oklahoma City.

Do you have a special mentor(s) who has helped you in the cattle industry?

A few people that have been influential in our success as breeders are John L. Montgomery Sr., Howard Goodman and Zack Dismukes. These gentlemen





helped guide us with breeding decisions and marketing of our cattle in the early years.

You have served and continue to serve the Hereford Industry at local and National levels. What motivates you to continue to serve in leadership positions in the cattle industry?

I was fortunate to be elected to the AHA Board of Directors in 2011. I served as Chair of the AHA Board in 2015. This was a great opportunity for me to give back to the association and breed that has been so good to my family.

Walker Herefords Contact Information:

P.O. Box 146, Morrison, TN 37357

Eric (931) 607-6356 • Cody (931) 607-0337

Conner Jagers (270) 218-1820

wphf@benlomand.net

WalkerHerefordFarm.com



Jim and Kay Coley
140 Morgan Rd,
Lafayette, TN 37083
615-804-2221
coleyherefords@gmail.com

Selling at the Tennessee Beef Agribition on Mar. 8, 2024



Lot 39

JC Lady Mandate 6589 302L

{DLF,HYF,IEF} (P44530468), calved Aug. 29, 2023

- A unique breeding piece. Sired by Mandate and out of a daughter of Manifest.
- A big spread from birth to yearling, excellent maternal and udder/teat scores.
- Bred AI to Birdwell Redbird 7098 0558ET on 12/26/24.



Lot 46

JC Manifest Lady 87G 211K

{DLF,HYF,IEF} (P44447508), calved Sept. 18, 2022

- One of the better females that we have ever sold.
- She sells with JC L1 Lady 248K N500 (44624358), a heifer calf born 01/02/25 sired by Churchill Advance 248K, birth wt. 72 lbs.
- Retaining the right to one flush of 6 or more freezable embryos.

Highridge Farm

Victor Domino Herefords

1571 Lowe Road
Crossville, Tennessee 38572

931 248 7272

highridgefarmtn@gmail.com

www.highridgeherefords.com



Mike Rogan
Rogersville, TN 37857
423-754-1213
roganfarm@yahoo.com

Bulls & Heifers For Sale



- Reg # 43889924
- Semen: \$25/Straw
- \$75/Certificate
- Owned with Colyer Herefords

C 4038 Bell Air 8057 ET

- Reg # P44536369
- Ranks in the Top 5% for WW, YW, CW, REA & TEAT EPDs.



RF Charleston 3013

Join the THA

Submit \$30 dues via PayPal or mail to:

Tennessee Hereford Association
Kay Coley, Treasurer
140 Morgan Rd
Lafayette, TN 37083
Cell 615-804-7843, or
tennesseehereford@gmail.com

Farm Name _____

Name _____

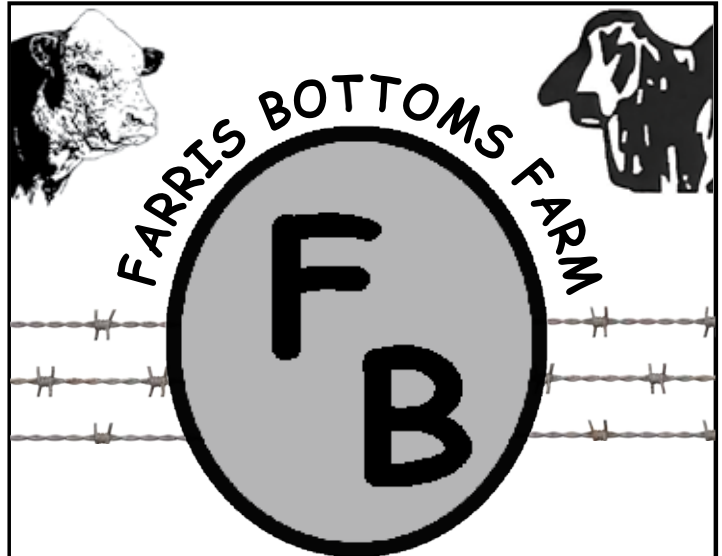
Address _____

City _____ State _____ Zipcode _____

Home Phone _____

Cell Phone _____

Email: _____



HEREFORD - BRAHMAN - F1 CROSSES

Herefords that excel in docility, calving ease and growth. Producing Hereford/Brahman F1 Golden Certified Hybrids with top quality Braford as the goal.
Cattle For Sale Private Treaty

Ronny & Gail Phillips
Hartsville, TN
615-655-5629

Caleb & Joanna Wix
Westmoreland, TN
615-655-3155

MG/4M **SPRING BULL & FEMALE SALE**

SATURDAY, FEBRUARY 22, 2025 - 1 P.M. CST

On The Farm - Woodville, Mississippi



Lunch will be served at noon.

89 HEAD SELL

15 Registered Spring Open Heifers - 40 F1 Brahman Fall Exposed Heifers
34 Bulls: 23 Hereford 5 Angus 5 Ultra Black 1 Red Angus



4M MR ADVANCE 192 419

10/16/23 - 44538677 - Horned - Sire: 4M MR TRUSTY MAN 719T 192
Dark red powerful herd bull!



4M MR HOMETOWN DOMINO 2079 454

11/20/23 - 44538756 - Polled - Sire: 4M 66589 DOMINO 2079 ET
Elite calving ease herd sire prospect!



4M MS RED HARLEY 4030 489

1/10/24 - 44562119 - Polled - Sire: 4M LF RED BOY 4030 Z44 221 ET
Big time cow prospect



4M MS 2079 LEADER 4133

2/16/24 - 44562209 - Horned - Sire: 4M 66589 DOMINO 2079 ET
Calving ease female with eye appeal



Broadcast live/online bidding at Liveauctions.tv

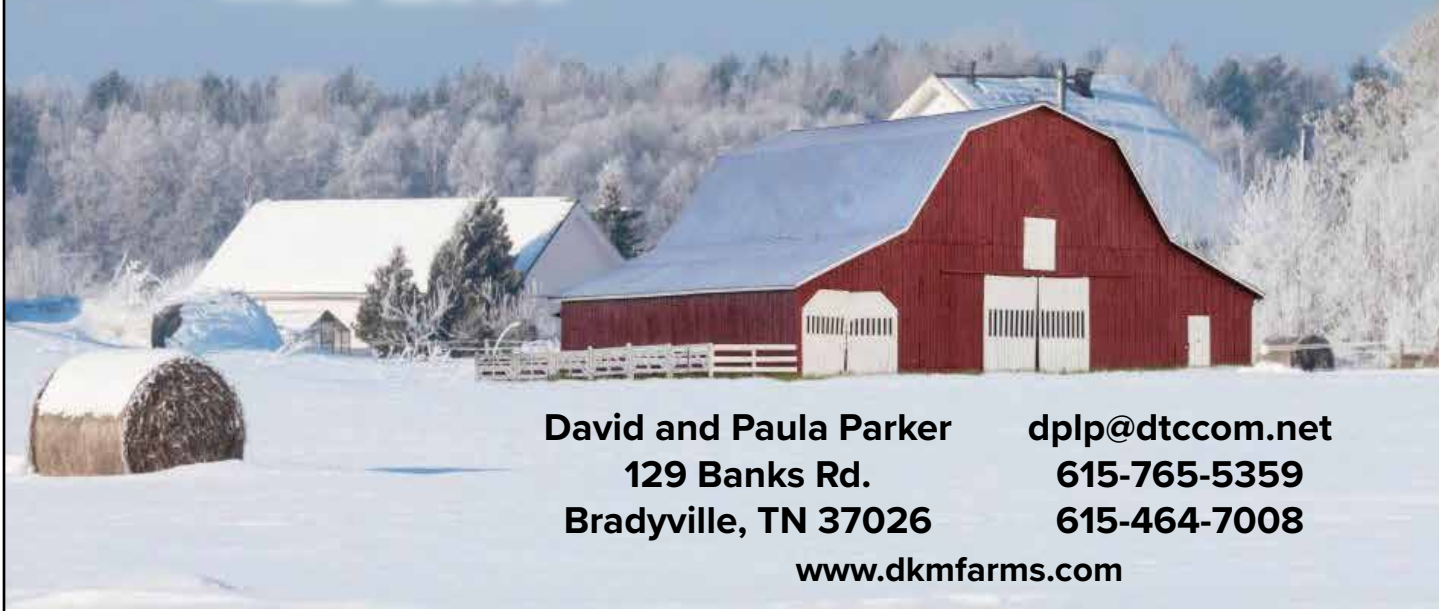


Ron, Shauna, Rylie and Stran Melancon
mgfarms@bellsouth.net
 Ron 601-597-5995 - Rylie 601-597-5000
 1417 U.S. Hwy. 61 South - Woodville, MS 39669
www.mg4mfarms.com
facebook.com/mgfarms



Sale Manager — Locke St. John
 P.O. Box 123 - Columbiana, AL 35051
 615-427-8979 - Lockestjohn93@gmail.com

Parker Bros. dkm



David and Paula Parker
129 Banks Rd.
Bradyville, TN 37026

dplp@dtccom.net
615-765-5359
615-464-7008

www.dkmfarms.com

Hicks Herefords

Darrell & Pat Hicks
Cullman, Al

256-352-6015 • 256-636-4997

mphicks41@msn.com

Bulls for Sale - Polled & Horned



Toby & Debby Dulworth
270-224-2993



Herefords
since 1964

Pasture-Selected

DOGWOOD FARM

Made to Graze

website: dogwoodherefords.com 2492 Kirkman, LaCenter, KY 42056

dogwood@brtc.net



CROUCH
POLLED HEREFORD FARM
McMinnville, TN

Russell, Beverly, Ryan, Penny,
Sawyer, Piper and Savannah

1610 Airport Lake Road
McMinnville, TN 37110
[racrouch@benlomand.net](mailto:racruz@benlomand.net)

Russell's Cell:
931-273-5819

Brian & Susan Carmouche
615-542-9980

Ashley & Josh Crain
931-607-3360

sbmouche@gmail.com
sbherefords.com

**SOUTHLAND
ACRES**

CATTLE
FOR SALE

VISITORS
WELCOME



REGISTERED POLLED HEREFORDS, MURFREESBORO, TN

Area Sales Report

Date	Name		#Lots	Gross	Top	Bull Avg	Female Avg	Embryo Avg	Comm. Avg
12/7/2024	Kentucky Hereford Autumn Sale	KY	39	\$125,300	\$5,450	\$3,947	\$3,079	\$-	\$2,388
12/6/2024	Knoll Crest Farm Fall Bull Sale	VA	30	\$238,000	\$16,000	\$7,933	\$-	\$-	\$-
11/23/2024	Southern Partners In Performance	NC	33.5	\$178,250	\$9,500	\$5,585	\$-	\$-	\$2,462
11/23/2024	McGuffee Herefords "Principles and Progress" Sale	MS	164	\$872,109	\$21,000	\$6,427	\$4,984	\$-	\$-
11/16/2024	MG/4M Bull & Female Sale	MS	48	\$262,700	\$10,259	\$5,839	\$4,960	\$600	\$3,254
11/16/2024	Middle Tenn. Hereford Assn Fall Sale	TN	46	\$131,800	\$5,600	\$2,625	\$2,888	\$-	\$1,863
11/9/2024	Mid-Atlantic Fall Bonanza Sale	VA	49	\$176,500	\$7,750	\$3,633	\$3,600	\$-	\$2,863
11/2/2024	Burns Farms	TN	64	\$317,650	\$12,000	\$4,963	\$-	\$-	\$2,668
10/28/2024	High Cotton Bull Sale	AL	68	\$466,000	\$50,000	\$6,853	\$-	\$-	\$4,391
10/26/2024	Dry Creek Farms	AL	46	\$391,200	\$31,000	\$7,000	\$8,538	\$1,250	\$-
10/26/2024	Debter Hereford Farm	AL	113	\$771,150	\$27,000	\$7,710	\$3,860	\$-	\$2,925
10/21/2024	Georgia's Fall Big Event	GA	110	\$516,225	\$21,000	\$5,600	\$4,650	\$440	\$-

THMP Report - November 13, 2024

PEN	HEAD	BREED	SEX	WEIGHT	AVG. WT.	PRICE
302	24	1 BWF, 23 HE	Steer	11,210	467	\$280.50
304	66	66 HE	Steer	36,890	559	\$256.00
306	52	3 BWF, 49 HE	Steer	33,585	646	\$238.00
310	21	1 BWF, 20 HE	Steer	15,625	744	\$234.75
314	10	3 BWF, 7 HE	Steer	7,420	842	\$223.50
425	2	2 HE	Steer	1,800	900	\$212.00
423	2	2 HE	Steer	2,310	1155	\$189.00
301	14	14 HE	Heifer	6,355	454	\$236.00
308	16	1 CX, 15 HE	Heifer	8,690	543	\$220.00
312	15	3 BWF, 12 HE	Heifer	9,750	650	\$214.00
316	2	2 HE	Heifer	1,485	743	\$208.00
441	5	5 HE	Heifer	4,125	825	\$197.00
427	2	2 HE	Heifer	690	345	\$231.00
429	1	1 HE	Heifer	410	410	\$242.00
431	1	1 HE	Heifer	580	580	\$219.00
300	6	6 HE	Steer	3,325	554	\$181.50

The THMP is open to any Hereford Influence feeder calves that have completed the weaning and health protocol. Calves must be weaned for a minimum of 45 days before the sale. They are required to be dewormed and receive 2 rounds of vaccines. The approved pharmaceuticals can be found at tnhereford.org or contact the UPI Sale Coordinator, Richard Brown, at 931-239-9785 for more information.

Calves must have THMP tags and a health record sheet completed before the consignment deadlines. To order tags, call Susan Parks at 931-433-4962 or email at sparks@uproducers.com.

**Spring 2025 Tennessee
Hereford Influence Sale
Wednesday, April 23, 2025
United Producers, Columbia, Tenn.
Weaning Deadline: March 10, 2025**

Tennessee Junior Hereford Association News

—Sally Wingler, TJHA Advisor

As I sit here writing this on a very freezing day in January. I cannot help but think how proud I am of our Tennessee Junior Hereford Association members and their accomplishments. The Tennessee Juniors have been both successful in and out of the showring this past year. I do not have the time and do not want to leave anyone out. I just want to say well done and let us keep up the excellent work juniors in representing the state of Tennessee on the state and national levels.

The calendar below is to remind the juniors about a few important events coming up soon. Stay tuned for more information on all these events. Remember to follow the Tennessee Junior Hereford Association on Facebook and Instagram for more information.



Tennessee Beef Agribition Lebanon Tennessee	March 7-9, 2025
THA Annual Meeting Lebanon, Tennessee	March 7, 2025
Tenn. Jr Hereford Meeting Lebanon, Tennessee	March 8, 2025
Southeast Regional Hereford Show Fletcher, North Carolina	June 20-22, 2025
National Junior Hereford Expo Louisville, Kentucky	July 12-18, 2025



Cattlemen's Congress Burns Farm Pen of 5 Champion



Burns Farm, Pikeville, TN won the Pen of 5 Bull show at the 2025 Cattlemen's Congress in Oklahoma City, OK.

The pen featured 3 sons of SR EXPEDITION 619G ET, a son of EXR GENERATOR 0333 ET, and a bull sired by JW 1857 MERIT 21134. The bulls had an average age of 269 Days

WEST TENNESSEE POLLED HEREFORD ASSOCIATION

President: John Wylie

Secretary: Elizabeth Wylie Boyarski

130 Trail Loop Drive, Apt 103, Paducah, KY 42001

731-695-0121 | wtnpha@gmail.com

SOUTHERN OPPORTUNITY SALE

3rd Saturday in February

Sale Manager: Bobby Singleton, 615-708-1034



Kathryn Ingram
Sale Manager Phone:
423-337-1383

Spring Sale:
4th Saturday in April
Annual meeting:
Friday night before sale
Location: KY/TN Livestock
Market, Cross Plains, TN

Spring Sale: Apr. 26, 2025

Dues \$25

Billy Jackson, Sec./Treasurer
PO Box 215
Cross Plains, TN 37049 Cell:
615-478-4483
billymjackson@aol.com



**KCF BENNETT
MONUMENT J338**

Reg # P44320126
Semen Available

CED	BW	WW	YW	MILK	SC	SCF	CW	REA	MARB	\$BMI	\$BII	\$CHB
15.9	-4.0	68	103	46	1.3	24.7	97	0.77	0.65	527	651	195



**KCF BENNETT
DOMINION K510**

Reg # P44405363
Semen Available

CED	BW	WW	YW	MILK	SC	SCF	CW	REA	MARB	\$BMI	\$BII	\$CHB
7.1	1.0	79	131	33	1.8	23.6	108	1.16	0.32	516	627	183



**KCF BENNETT
BEDROCK H642**

Reg # P44250089
Semen Available

CED	BW	WW	YW	MILK	SC	SCF	CW	REA	MARB	\$BMI	\$BII	\$CHB
11.0	-0.4	75	107	46	1.4	15.4	86	0.76	0.35	373	479	154



**SHF HEADSTRONG
D287 H315 ET**

Reg # P44123822
Semen Available

CED	BW	WW	YW	MILK	SC	SCF	CW	REA	MARB	\$BMI	\$BII	\$CHB
6.0	2.2	79	122	33	2.2	19.2	95	1.00	0.35	437	547	162



**KCF BENNETT
EAGLE H550**

Reg # P44249999
Semen Available

CED	BW	WW	YW	MILK	SC	SCF	CW	REA	MARB	\$BMI	\$BII	\$CHB
8.6	0.5	83	133	36	1.9	22.5	82	0.52	0.61	479	616	172



REGISTER FOR SALE

Sale book available upon request PRE-REGISTER for the Sale at www.KNOLLCRESTFARM.com or by scanning the QR Code

+ Featuring
100 BULLS

SPRING BULL & HEIFER SALE

APRIL 12, 2025

SATURDAY, 12:00 NOON EDT

SELLING

40 Registered Bred Heifers

80 Commercial Bred Heifers

SELLING SONS OF THESE SIRES

KCF Bennett Monument J338

KCF Bennett Eagle H550

SHF Headstrong D287 H315

Birdwell Dynamic 5022 1673

SHF Houston D287 H086

*Angus, Hereford,
Gelbvieh and Balancer Bulls*



Knoll Crest Farm

Serving the beef industry since 1944

Paul S. Bennett
(434) 941-8245

Dalton G. Bennett
(434) 664-7946

Jim G. Bennett
(434) 664-7935

Brian R. Bennett
(434) 664-8309

Scott R. Bennett
(434) 660-7268

P.O. Box 117 • Red House, VA 23963
Martha Johnson, Office Manager
(434) 376-3567

knollcrest@knollcrestfarm.com

www.knollcrestfarm.com



The 57th Annual North Carolina Hereford Classic



*Catalog will be available online
at hereford.org & nchereford.com*

March 22, 2025 • Noon
Shuffler Farm, Union Grove, NC

**Open & Bred Heifers
Cow-Calf Pairs • Breeding Age Bulls
Commercial Females**

LiveAuctions TV 2.0

Contact: Kathryn Ingram (423) 337-1383 or katingram.123@gmail.com

Middle Tennessee Hereford Association Scholarships Available!
Contact Stan East for more information at staneast3@gmail.com
Applications due April 1, 2025

Tennessee Hereford Women News

—Andrea Rushton, President Tennessee Hereford Women

As we enter the new year before us, the Hereford Women of Tennessee hope 2024 was a year that brought you all health, happiness and success. We are eagerly anticipating all the good things that 2025 has in store for our Tennessee Hereford Family!

Tennessee Beef Agribition is right around the corner, and we look forward to seeing everyone soon! Following a very brief hiatus in having an active Tennessee Hereford Queen, we are excited about crowning a new queen at our annual meeting in Lebanon. We have been honored to be represented so well by many young ladies in the past and know the next young lady to wear the tiara will be amazing. The 2025 application was updated on the Tennessee Hereford website in January for active submissions. Sally Wingler has been instrumental in this program

in recent years and can answer questions for anyone who has an interest in competing for this title. She can be contacted at (615) 686-7157 or sallyhwingler@gmail.com.

The academic scholarship sponsored by the Tennessee Hereford Women will also be presented during Agribition. This application is also updated yearly on the Tennessee Hereford website with all juniors being notified by email. This decision is always a tough one for any selection committee as Tennessee has again been blessed by so many inspiring and active juniors. Good luck to all who apply. We hope the winter season is bearable for you all and look forward to a bright and prosperous new year ahead.

Upcoming Events

FEBRUARY

Feb. 1 - Walker Herefords Foundations for the Future Bull Sale Morrison, TN
 Feb. 15 - Magnolia Hereford Association 66th Annual Polled and Horned Hereford Sale Magnolia, AR
 Feb. 17 - Five Star Polled Herefords & Haught Bros. A Lasting Legacy Sale Harrisville, WV
 Feb. 15 - Southern Opportunity Sale Lexington, TN
 Feb. 22 - Chapman & Woolfolk Bull and Female Sale Nunnely, TN

MARCH

Mar. 1 - Kentucky Beef Expo Hereford Sale Louisville, KY
 Mar. 7 - Tennessee Hereford Association Annual Meeting Lebanon, Tenn.
 Mar. 8 - Tennessee Beef Agribition Sale Lebanon, TN
 Mar. 8 - Boyd Beef Cattle Performance Tested Bull Sale Mays Lick, KY
 Mar. 22 - North Carolina Hereford Classic Sale Union Grove, NC
 Mar. 22 - Candy Meadow Farm Bull & Female Sale Lexington, Tenn.

APRIL

Apr. 12 - Knoll Crest Farm Bull Sale Red House, VA
 Apr. 18 - Mid-Atlantic Spring Bonanza Sale Harrisonburg, VA
 Apr. 19 - Clifford Farms and Guests Sale
 Apr. 25 - Middle Tennessee Hereford Association Annual Meeting Cross Plains, TN
 Apr. 26 - Middle Tennessee Hereford Association Spring Sale Cross Plains, TN

MAY

May 3 - South Carolina Hereford Association Sale Clemson, SC
 May 3 - TRM Dixie Land Delight Sale, Fort Payne, AL
 May 4 - Innisfail Farm Sale Madison, GA
 May 10 - Burns Farms Female Sale Pikeville, TN
 May 17 - Chapman Land & Cattle Herefords Rockin' In The South Nunnely, TN
 May 19 - Kentucky Hereford Assn. Certified Hereford-influenced Feeder Calf Sale Blue Grass Stockyards - Lexington, KY
 May 24 - 4B Farm, LLC Shelby, NC
 May 26 - Mead Cattle Enterprises Sale Midville, GA

HAPPY HILL POLLED HEREFORDS

J.G. Walker, Jr.,

3690 Yum Yum Rd, Somerville, TN 38068
 Home: 901-465-3392 • Cell: 901-413-6189

*Cattle for Sale Private Treaty, Bulls and Females
 Visitors Always Welcome!*

**Cow Herd: Daughters of F243, J3-161, P606, 719T,
 755T, Trust, Revolution 4R, X51, Durango, and
 Kaboom (full brother to P606)**

TERRACE FARMS



JIM DAVIS / LINDA DAVIS / CHAD DAVIS

C 336-247-1554 H 336-853-8019 C 336-479-2009
 243 Horseshoe Neck Rd., Lexington, NC 27295

Registered Herefords Since 1938
 TERRACEFARMS@GMAIL.COM



Registered Polled Herefords

Stan & Connie East 241 Old Lebanon Road
 (615) 588-7522 Carthage, TN 37030

ROBERSON'S POLLED HEREFORDS

BREEDING FOR PERFORMANCE AND MATERNAL MILK

JERRY ROBERSON

P.O. BOX 492 • PORTLAND, TN 37148 • 615-325-1883
 GUIDE LINES BREEDER • CERTIFIED AND ACCREDITED HERD

Advertising Index


Bar-W Cattle Co. _____	21	Notchey Creek Farms _____	21
Boyd Beef Cattle _____	6	North Carolina Hereford Association _____	19
Candy Meadow Farm _____	1	Parker Brothers _____	16
Chapman Land & Cattle _____	2	ProTritition Feed, LLC _____	22
Coley Herefords _____	12	Roberson's Polled Herefords` _____	20
Coley's Rocky Valley Herefords _____	12	Rogan Farms _____	13
Crouch Polled Herefords _____	15	Shope Farms _____	8
Dogwood Farm _____	15	Southland Acres _____	15
East Polled Herefords _____	20	Terrace Farms _____	20
East Tennessee Hereford Assn. _____	8	Tennessee Hereford Association _____	4
Farris Bottoms _____	13	W&A Herefords _____	5
Happy Hill Polled Herefords _____	20	Walker Polled Herefords _____	BC
Hicks Herefords _____	15	Webster Polled Herefords _____	8
Highridge Farm _____	13	West Tennessee Hereford Assn. _____	9, 17
Jackson Farms _____	8	Woolfolk Farms _____	2
Kerr Polled Herefords _____	10		
Knoll Crest Farm _____	18		
MG/4M _____	14		
Middle Tennessee Hereford Assn. _____	17		

Future Focused!

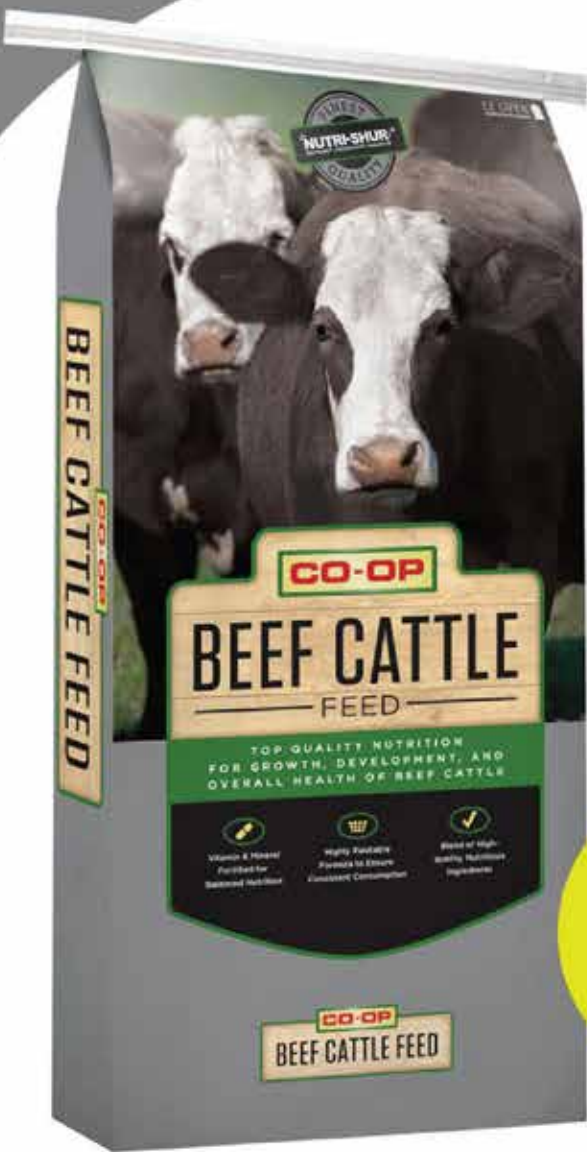
Visitors Welcome! We are excited about the cow herd we are building and the future. Come check out the Fall calf-crop.



Look for our consignments in upcoming regional sales


BAR-W CATTLE CO.
 The West's
 Brandon, Kristin, Ryleigh, Carver & Colt
 Madisonville, Tennessee
 (423) 572-2582 | www.bar-w-cattle.com


Notchey Creek Farms
 Mitch & Kathryn Ingram
 Madisonville, Tennessee
 (423) 337-1383 | (423) 337-1074
www.notcheycreekfarms.com



NEW!

14% BEEF GENERATOR BP-MON

**1/4
INCH
PELLET**

- ### **ABILITY IN EVERY BITE**
- DIGESTIBILITY
 - FLOWABILITY
 - PALATABILITY
 - AFFORDABILITY
 - RELIABILITY
 - FEASIBILITY
 - ACCEPTABILITY
 - COMPATIBILITY
 - PERFORMABILITY

— SINCE 1945 —



THE PROVEN BRAND

LARGER PELLET SIZE FOR EASE OF FEEDING, DIGESTIBILITY, FEEDER AND STORAGE FLOWABILITY

CRUDE PROTEIN (min.) - 14.00%
CRUDE FAT (min.) - 2.30%
CRUDE FIBER (max.) - 25.00%



**LEARN
MORE**



Bulk or Bag

Top Picks

AT THE TENNESSEE BEEF AGRIBITION

Saturday, March 8

James E. Ward Agriculture Center • Lebanon, Tennessee



She sells!

TERI

44596892 • 8/22/2024

BR Belle Air E133 ET

BR GKB Winchester I314

BR Anastasia E117 ET

Walker Teri I314 39G 4117M ET

EFBEEF BR Validated B413

BR Validated 39G

BR Revolution Y428 2208 4516

Attention Juniors!

Talk about a sweet prospect here! A neat Winchester heifer that's as sound as a cat and stout as an ox. This great fall heifer can go show with the best of them and make a future front pasture female. She's a great fit for junior nationals in Louisville this summer!

Selling

FROZEN EMBRYOS FROM THESE MATINGS

4 IVF Embryos

Loewen Sandhill L70 ET (44455227) X SSF 30A MS Mandate 471 (44307690)

4 IVF Embryos

KCF Bennett Dominion K510 (44405363) X EXR Gemini 7233 ET (43850435)

4 IVF Embryos

L III EFBEEF Tall Grass 2017 (44355900) X EXR Gemini 7233 ET (43850435)

Guaranteed one pregnancy if implanted by a certified technician.
Embryos are stored at Trans Ova Genetics in Lawrenceville, Georgia.

**Here's your chance to buy breed leading,
cutting edge genetics all wrapped up in one package.**

IW
Walker Herefords

ERIC WALKER FAMILY

P.O. Box 146 ■ Morrison, TN 37357

Eric (931) 607-6356 ■ Cody (931) 607-0337

Conner Jagers (270) 218-1820

wphf@benlomand.net ■ WalkerHerefordFarm.com



POWERFUL ■ PRODUCTIVE ■ PROMISING